

Cyclin D1 (G1-Cyclin & Mantle Cell Lymphoma Marker) Antibody

Mouse Monoclonal Antibody [Clone CCND1/12039]

Catalog No	Format	Size
595-MSM18-P0	Purified Ab with BSA and Azide at 200ug/ml	20 ug
595-MSM18-P1	Purified Ab with BSA and Azide at 200ug/ml	100 ug
595-MSM18-P1ABX	Purified Ab WITHOUT BSA and Azide at 1.0mg/ml	100 ug

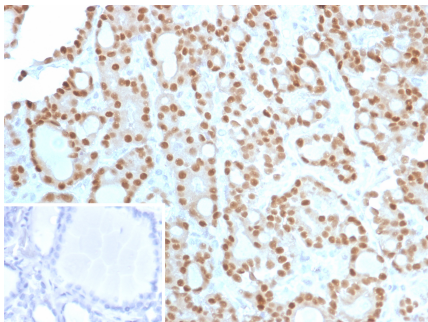
Applications	Tested Dillution	Note
Immunohistochemistry (IHC)	1-2ug/ml	30 min at RT. Staining of formalin-fixed tissues requires heating tissue sections in 10mM Tris with 1mM EDTA, pH 9.0, for 45 min at 95°C followed by cooling at RT for 20 minutes

Product Details

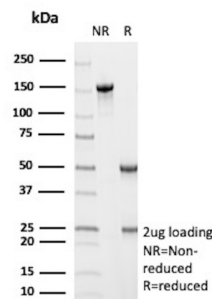
Clone	CCND1/12039
Gene Name	CCND1
Immunogen	Recombinant fragment (around aa100-295) of Cyclin D1 protein (exact sequence is proprietary)
Host	Mouse
Clonality	Monoclonal
Isotype / Light Chain	IgG / Kappa
Mol. Weight of Antigen	36kDa
Cellular Localization	Nucleus
Species Reactivity	Human
Positive Control	Human mantle cell lymphoma, breast or bladder carcinomas.

*Optimal dilution for a specific application should be determined.

Product Images for Cyclin D1 (G1-Cyclin & Mantle Cell Lymphoma Marker) Antibody



Formalin-fixed, paraffin-embedded human thyroid stained with Cyclin D1 Mouse Monoclonal Antibody (CCND1/12039). Inset: PBS instead of primary antibody; secondary only negative control.



SDS-PAGE Analysis of Purified Cyclin D1 Mouse Monoclonal Antibody (CCND1/12039). Confirmation of Purity and Integrity of Antibody.

Specificity & Comments

Recognizes a protein of 36kDa, identified as cyclin D1. Cyclin D1, one of the key cell cycle regulators, is a putative proto-oncogene overexpressed in a wide variety of human neoplasms. This antibody neutralizes the activity of cyclin D1 in vivo. About 60% of mantle cell lymphomas (MCL) contain a t(11; 14)(q13; q32) translocation resulting in over-expression of cyclin D1. This antibody is useful in identifying mantle cell lymphomas (cyclin D1 positive) from CLL/SLL and follicular lymphomas (cyclin D1 negative). Occasionally, hairy cell leukemia and plasma cell myeloma weakly express Cyclin D1.

Limitations and Warranty

This antibody is available for research use only and is not approved for use in diagnosis. There are no warranties, expressed or implied, which extend beyond this description. Company is not liable for any personal injury or economic loss resulting from this product.

Supplied As

200ug/ml of Ab purified from Bioreactor Concentrate by Protein A/G. Prepared in 10mM PBS with 0.05% BSA & 0.05% azide. Also available WITHOUT BSA & azide at 1.0mg/ml.

Storage and Stability

Antibody with azide - store at 2 to 8°C. Antibody without azide - store at -20 to -80°C. Antibody is stable for 24 months. Non-hazardous. No MSDS required.

Research Areas

Breast Cancer, Cardiovascular, Immunology, AKT Signaling, Bladder Cancer, Colon Cancer, Cytokine Signaling, Infectious Disease, Lung Cancer, Nuclear Marker, Signal Transduction, Transcription Factors
