

ERG / ETS Transcription Factor (Prostate Cancer Marker) Antibody

Mouse Monoclonal Antibody [Clone ERG1/12590]

Catalog No	Format	Size
2078-MSM10-P0	Purified Ab with BSA and Azide at 200ug/ml	20 ug
2078-MSM10-P1	Purified Ab with BSA and Azide at 200ug/ml	100 ug
2078-MSM10-P1ABX	Purified Ab WITHOUT BSA and Azide at 1.0mg/ml	100 ug

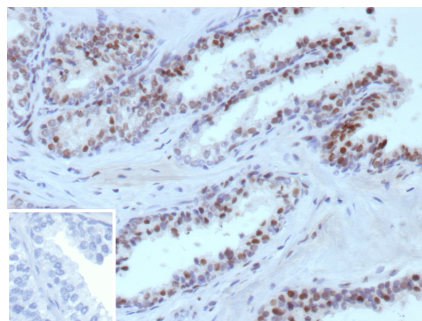
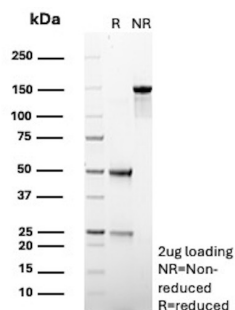
Applications	Tested Dillution	Note
Immunohistochemistry (IHC)	1-2ug/ml	30 min at RT. Staining of formalin-fixed tissues requires heating tissue sections in 10mM Tris with 1mM EDTA, pH 9.0, for 45 min at 95°C followed by cooling at RT for 20 minutes

Product Details

Clone	ERG1/12590
Gene Name	ERG
Immunogen	Recombinant fragment (around aa1-300) of human ERG (exact sequence is proprietary)
Host	Mouse
Clonality	Monoclonal
Isotype / Light Chain	IgG1 / Kappa
Mol. Weight of Antigen	55kDa
Cellular Localization	Nucleus
Species Reactivity	Human
Positive Control	Human tonsil, Ewing sarcoma or prostate adenocarcinoma.

*Optimal dilution for a specific application should be determined.

Product Images for ERG / ETS Transcription Factor (Prostate Cancer Marker) Antibody



SDS-PAGE Analysis of Purified ERG Mouse Monoclonal Antibody (ERG1/12589). Confirmation of Purity and Integrity of Antibody.

Formalin-fixed, paraffin-embedded human prostate carcinoma stained with ERG Mouse Monoclonal Antibody (ERG1/12589). Inset: PBS instead of primary antibody; secondary only negative control.

Specificity & Comments

ERG (ETS-related gene) is a proto-oncogene, a member of the ETS family of transcription factors. The ERG gene encodes for a nuclear protein, also called ERG, which is involved in hematopoietic and endothelial development. ERG remains constitutively expressed in endothelial cells in blood and lymphatic vessels, and in bone marrow stem cells. ERG is expressed in virtually all endothelial neoplasms including hemangioendothelioma, angiosarcoma and Kaposi sarcoma. ERG is overexpressed secondary to gene rearrangement in cases of prostate adenocarcinoma, gastrointestinal stromal tumor, synovial sarcoma, meningioma, epithelioid sarcoma, malignant rhabdoid tumor, acute myeloid leukemia and blastic extramedullary myeloid tumor, and rarely Ewing sarcoma / primitive peripheral neuroectodermal tumor, chondrosarcoma, osteosarcoma, and rhabdomyosarcoma. For the identification of endothelial differentiation ERG seems more sensitive and specific than any other marker. Moreover, the interpretation is often easier due to the nuclear reaction, which also allows for double stains with cytoplasmic markers like podoplanin. Among carcinomas, ERG is highly specific for prostate, while the sensitivity is moderate.

Limitations and Warranty

This antibody is available for research use only and is not approved for use in diagnosis. There are no warranties, expressed or implied, which extend beyond this description. Company is not liable for any personal injury or economic loss resulting from this product.

Supplied As

200ug/ml of Ab purified from Bioreactor Concentrate by Protein A/G. Prepared in 10mM PBS with 0.05% BSA & 0.05% azide. Also available WITHOUT BSA & azide at 1.0mg/ml.

Storage and Stability

Antibody with azide - store at 2 to 8°C. Antibody without azide - store at -20 to -80°C. Antibody is stable for 24 months. Non-hazardous. No MSDS required.

Research Areas

Prostate Cancer, Endothelial Cell Marker, Nuclear Marker, Transcription Factors
