

CXCR5 (Marker of T Follicular Helper (Tfh) Cells) Antibody

Mouse Monoclonal Antibody [Clone CXCR5/13100]

Catalog No	Format	Size
643-MSM10-P0	Purified Ab with BSA and Azide at 200ug/ml	20 ug
643-MSM10-P1	Purified Ab with BSA and Azide at 200ug/ml	100 ug
643-MSM10-P1ABX	Purified Ab WITHOUT BSA and Azide at 1.0mg/ml	100 ug

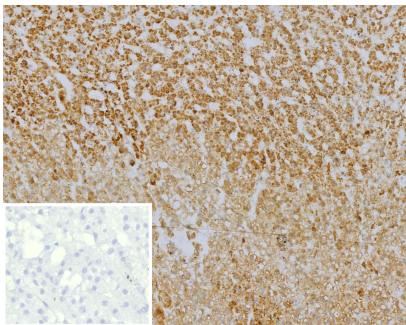
Applications	Tested Dillution	Note
Immunohistochemistry (IHC)	1-2ug/ml	30 min at RT. Staining of formalin-fixed tissues requires heating tissue sections in 10mM Tris with 1mM EDTA, pH 9.0, for 45 min at 95°C followed by cooling at RT for 20 minutes

Product Details

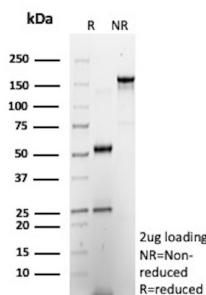
Clone	CXCR5/13100
Gene Name	CXCR5
Immunogen	Recombinant fragment of human CXCR5 protein (exact sequence is proprietary)
Host	Mouse
Clonality	Monoclonal
Isotype / Light Chain	IgG2b / Kappa
Mol. Weight of Antigen	56kDa
Cellular Localization	Cell membrane
Species Reactivity	Human
Positive Control	Human placenta, brain, lung, transitional cell carcinoma, testis, ovarian serous carcinoma or hepatocellular carcinoma.

*Optimal dilution for a specific application should be determined.

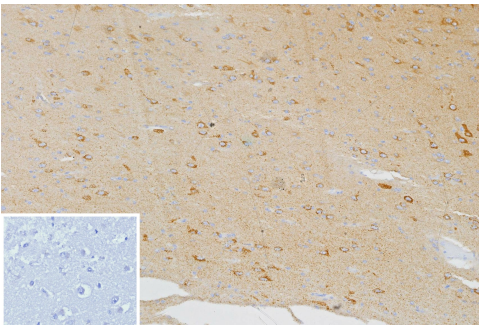
Product Images for CXCR5 (Marker of T Follicular Helper (Tfh) Cells) Antibody



Formalin-fixed, paraffin-embedded human adrenal gland stained with CXCR5 Mouse Monoclonal Antibody (CXCR5/13100). Inset: PBS instead of primary antibody; secondary only negative control.



SDS-PAGE Analysis of Purified CXCR5 Mouse Monoclonal Antibody (CXCR5/13100). Confirmation of Purity and Integrity of Antibody.



Formalin-fixed, paraffin-embedded human brain stained with CXCR5 Mouse Monoclonal Antibody (CXCR5/13100). Inset: PBS instead of primary antibody; secondary only negative control.

Specificity & Comments

Burkitt's lymphoma receptor 1 (Blr1) is a lymphocyte specific chemokine receptor expressed at low levels in secondary lymphoid tissues and in defined structures of the cerebellum. The G protein-coupled receptor has significant homology to other chemokine receptors. Stimulation of Blr1 by its ligand, B-lymphocyte chemoattractant (BLC) results in an influx of calcium into the cell and the chemotaxis of the cell. Blr1 is required for B-cell migration into splenic and Peyer's patch follicles. BLC expression in Peyer's patches is highest in germinal centers, where B cells undergo somatic mutation and affinity maturation.

Limitations and Warranty

This antibody is available for research use only and is not approved for use in diagnosis. There are no warranties, expressed or implied, which extend beyond this description. Company is not liable for any personal injury or economic loss resulting from this product.

Supplied As

200ug/ml of Ab purified from Bioreactor Concentrate by Protein A/G. Prepared in 10mM PBS with 0.05% BSA & 0.05% azide. Also available WITHOUT BSA & azide at 1.0mg/ml.

Storage and Stability

Antibody with azide - store at 2 to 8°C. Antibody without azide - store at -20 to -80°C. Antibody is stable for 24 months. Non-hazardous. No MSDS required.

Research Areas

Cardiovascular, AKT Signaling, B Cell Markers, Signal Transduction
