

## Recombinant Parvalbumin / PVALB Antibody

Mouse Monoclonal Antibody [Clone rPVALB/9839]

Catalog No	Format	Size
5816-MSM6-P0	Purified Ab with BSA and Azide at 200ug/ml	20 ug
5816-MSM6-P1	Purified Ab with BSA and Azide at 200ug/ml	100 ug
5816-MSM6-P1ABX	Purified Ab WITHOUT BSA and Azide at 1.0mg/ml	100 ug

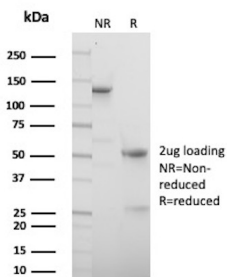
Applications	Tested Dillution	Note
Western Blot (WB)	2-4ug/ml	

### Product Details

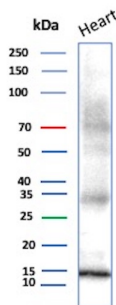
<b>Clone</b>	rPVALB/9839
<b>Gene Name</b>	PVALB
<b>Immunogen</b>	Recombinant fragment (around aa1-110) of human PVALB protein (exact sequence is proprietary)
<b>Host</b>	Mouse
<b>Clonality</b>	Monoclonal
<b>Isotype / Light Chain</b>	IgG1 / Kappa
<b>Mol. Weight of Antigen</b>	12kDa
<b>Cellular Localization</b>	Cell junction, Nucleus
<b>Species Reactivity</b>	Human
<b>Positive Control</b>	Human brain, heart or kidney.

\*Optimal dilution for a specific application should be determined.

### Product Images for Recombinant Parvalbumin / PVALB Antibody



SDS-PAGE Analysis of Purified Parvalbumin Recombinant Mouse Monoclonal Antibody (rPVALB/9839). Confirmation of Purity and Integrity of Antibody.



Western blot analysis of human heart tissue lysate using Parvalbumin Recombinant Mouse Monoclonal Antibody (rPVALB/9839).

### Specificity & Comments

The family of EF-hand type Ca<sup>2+</sup>-binding proteins includes calbindin (previously designated vitamin D-dependent Ca<sup>2+</sup>-binding protein), S-100 $\beta$  and  $\gamma$ , calgranulins A (also designated MRP8), B (also designated MRP14) and C (S-100 like proteins) and the parvalbumin family members, including parvalbumin  $\beta$  and parvalbumin  $\gamma$ , also designated oncomodulin (OCM). Structurally and evolutionarily conserved, parvalbumin  $\beta$  and OCM proteins are distinct in expression and function. Parvalbumin  $\beta$ , also designated parvalbumin (PV), is most abundantly expressed in fast-contracting muscles with lower expression levels in brain and some endocrine tissues, including kidney and parathyroid. Research indicates that parvalbumin  $\beta$  plays a significant role in muscle relaxation. OCM was originally thought to have expression restricted to neoplastic tissues, early embryonic cells and certain tumor cell lines. Recent research shows that OCM is also expressed and secreted by macrophages where, in the retina it binds to retinal ganglion cells (RGCs) and functions to promote axon regeneration. OCM has also been detected in the auditory sensory cells of the organ of Corti in mammals. In humans, two different loci on chromosome 7 have been identified as OCM and OCM-like (LOC4951). These genes encode proteins 109 amino acids in length which share 99% sequence identity.

---

### Limitations and Warranty

This antibody is available for research use only and is not approved for use in diagnosis. There are no warranties, expressed or implied, which extend beyond this description. Company is not liable for any personal injury or economic loss resulting from this product.

---

### Supplied As

200ug/ml of Ab purified from Bioreactor Concentrate by Protein A/G. Prepared in 10mM PBS with 0.05% BSA & 0.05% azide. Also available WITHOUT BSA & azide at 1.0mg/ml.

---

### Storage and Stability

Antibody with azide - store at 2 to 8°C. Antibody without azide - store at -20 to -80°C. Antibody is stable for 24 months. Non-hazardous. No MSDS required.

---

### Research Areas

Neuroscience

---